

# STELLA-CRETE

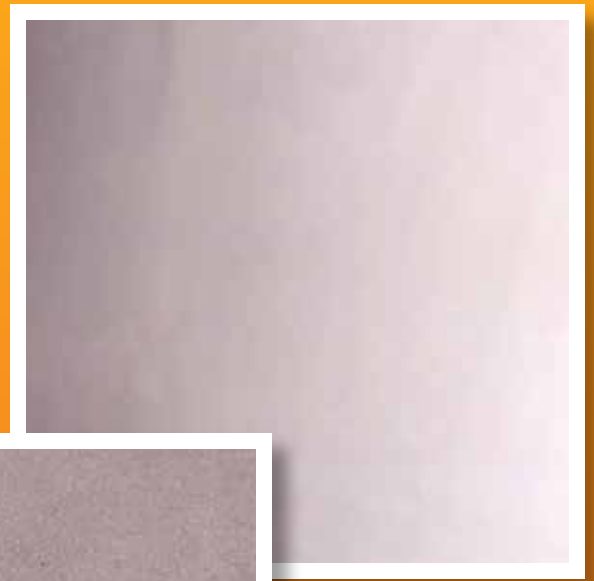
## SKM-600

### SKIM COAT

### Speed Up

### Finishing Effects

- ✓ **High Water Resistant**
- ✓ **Anti Scratch**
- ✓ **Excellent adhesion to substrate**
- ✓ **Impact and vibration resistant**



KEEP  
COOL & DRY



GREY  
POWDER



BUATAN MALAYSIA  
MADE IN MALAYSIA

# STELLA-CRETE

## SKM-600 SKIM COAT 600

**SKIM COAT 600 is special formulated single component skim coating that provides finishing effects simultaneously for interior walls and ceilings on cement rendered or concrete substrate. Single coat base with finishing effects speed up work progress and lower labour cost.**

Product Information		Packaging: 40kg
Appearance/ Colour	Grey Powder	
Shelf Life	6 Months from the date of production	
Storage Conditions	Proper storage in original unopened and undamaged sealed packaging in dry conditions at temperature between +10°C and +30°C. Keep away from direct sunlight, rain and water and do not stack more than 15 layers.	
Dry Solid Content	100%	
Mass Density	Approximately 1300 kg/m <sup>3</sup>	
Chloride Ion Content	None	
Maximum Grain Size	1 mm	

TECHNICAL DATA	
PH Of Mix	> 11
Mixing ratio, water with 40 KG bag	8.4 to 9.0 liters
Consistency of mix	Very pasty
Density of mix	Approximately 1700 kg/m <sup>3</sup>
Temperature Range	+5°C to +30°C
Pot Life	60 Minutes (at +25°C)
Thickness possible for single coat	1 to 5 mm
Waiting time before painting	> 3 Days

FINAL PERFORMANCES	
Adhesion to substrate	≥0.5 Mpa
Flexural Strength	≥1.0 Mpa
Comp. Strength After 28 Days	≥3.0 Mpa
Resistance to oils	Excellent except vegetable oil
Resistance to solvent	Excellent
Consumption	Approximately 1.20kg/ m <sup>2</sup> / mm
Capillary water absorption	≤1.70 kg/ m <sup>2</sup> .min <sup>0.5</sup>

### CONTACT US

## Stella Crete Sdn Bhd

No 8, Jalan Lira U3/41, Seksyen U3,  
40150 Shah Alam, Selangor Darul Ehsan.

Tel: +603 7859 9818  
Fax: +603 7859 0188

www.bond-ace.com

stellacrete.sb@gmail.com

### PRODUCT FOR PROFESSIONAL USE

#### APPLICATION EXAMPLES

- Concrete Surfaces
- Pre-cast concrete panel
- Cement rendered surface
- Cement sand block walls
- ALC/ AAC/ Light weight block
- Cement sand hollow-cored panels

#### RECOMMENDATIONS

- Do not add cement or additive to STELLA SKIM COAT 600
- Do not add water when the mix begins to set
- Do not used on painted surface

#### ADVANTAGES

- High water resistant
- Anti Scratch
- Excellent adhesion to substrate
- Impact and vibration resistant
- Highly flexible and shrinkage compensated: reduce the chances
- Super smooth finishing surface
- Reduce paint consumption of shrinkage cracks
- Pre-bagged with high quality consistency
- Time saving
- Less labour intensive
- Single component: fixed mixing proportions, ensure the quality of work.
- Easy to mix and apply
- Good durability and anti scratch
- Non-toxic and non-corrosive

### APPLICATION PROCEDURE

#### Substrate Preparation

- Substrate must be sound, clean, smooth, no peeling, no hollowness, free from powder, dust, oil and other loose particles
- Ensure obvious pores or voids are repaired and levelled. Sharp edges should be removed
- Dampen the surface when the substrate is too dry. Before application, it is advise to moistened without excess water
- Apply skim coat to plastered surface which is cured for 7 days. Do not adopt cement mortar for press polish.

### PREPARING THE MIX

STELLA SKIM COAT 600 shall be mixed with clean water and stirred with mechanical paddle mixer until the desired paste is achieved.

#### DO NOT MIX MANUALLY.

One 40 KG bag of STELLA SKIM COAT 600 should be mixed with between 8.4 to 9.0 liters of clean water and the mixed product remains usable for 1 hours.

#### Applying the mix

Apply by trowel or spatula. Perform an undercoat to make up desired extra thickness for uneven surfaces.

Make sure applied layer is dried before apply subsequent layer.

After desired thickness is achieved, wait for approximately 10 to 15 minutes, press firm and troweling with cleaned spatula to achieve **super smooth** finishing.

### CLEANING

Tools can be cleaned with water before the products dry.

### SAFETY INSTRUCTIONS FOR PERPARATION AND APPLICATION

The applicator is advisable to use protective gloves, mask and goggles and take the usual precautions for handling chemicals. If the product comes in contact with the eyes or skin, wash immediately with plenty of clean water. If uncomfortable feeling is persistent, seek medical expert consultation.

For further and complete information about the safe use of our product please refer to the latest version of our Material Safety Data Sheet.

**Packaging: 40kg**